

CATTLEMAN INSTALLATION SHEET

03-04 CHEVY 1/2 TON REPLACEMENT

PART # 2160

INSTALLATION KIT

WRAP	LIC. PLATE
8 - 1/2 X 2" BOLT	2 - 1/4 X 3/4" BOLT
8 - 1/2" NUT	2 - 1/4" NUT
8 - 1/2" LOCK WASHER	2 - 1/4" LOCK WASHER
16 - 1/2" FLAT WASHER	4 - 1/4" FLAT WASHER

STEP 1: Remove factory bumper.

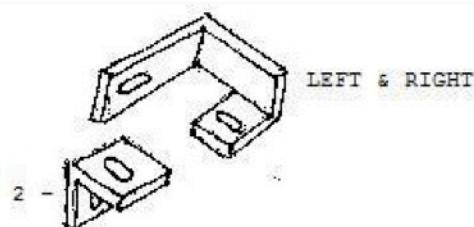
STEP 2: Bolt front end replacement to the outside of the frame as shown.

STEP 3: Bolt "L" with tap bracket to replacement horn hole and to the top of the frame hole as shown on BB and DD.

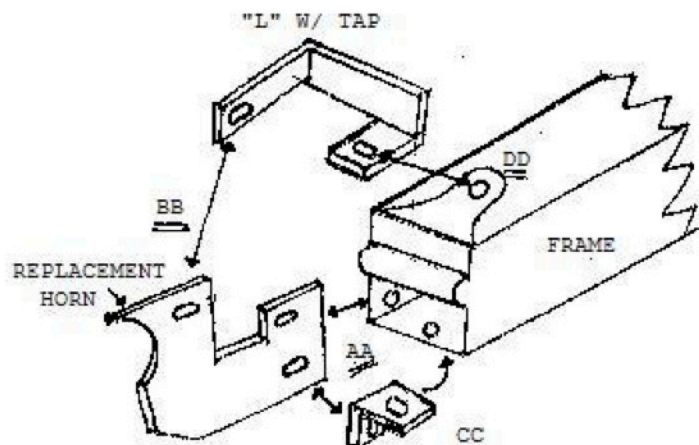
STEP 4: Bolt angle bracket to the side of the horn and to the bottom of the frame as shown on CC.

STEP 5: Check alignment on the replacement bumper on the sides and on the front and tighten bolts.

STEP 6: Place factory lights on replacement taps under the top deck on each side.



03-06 CHEVY 1/2 TON REPLACEMENT MOUNT



www.cattlemanhd.com

